

DATE: 23 February 2022
DESIGNER: Thomas McCormack / Ross Traynor
PROJECT No: 21053
PROJECT NAME: Fassaroe



LINK ROAD DESIGN TO EN13201-2:2015 CATEGORY P3 & IN ACCORDANCE WITH WICKLOW COUNTY COUNCIL GUIDANCE FOR PUBLIC LIGHTING WORKS APRIL 2017.

Public Lighting Link Road

Layout Report

General Data

Dimensions in Metres Angles in Degrees

Calculation Grids

ID	Grid Name	X	Y	X' Length	Y' Length	X' Spacing	Y' Spacing
1	Grid 1	722940.39	717978.34	369.87	144.18	1.50	1.49
2	Grid 2	723307.94	717918.98	189.32	249.50	1.49	1.49
3	Grid 3	723384.64	718157.47	98.75	137.29	1.50	1.49
4	Grid 4	723497.15	718228.54	237.23	54.21	1.49	1.47
5	Grid 5	723703.31	718190.73	181.20	52.84	1.50	1.47
6	Grid 6	723859.46	718097.69	209.55	62.05	1.50	1.48
7	Grid 7	723984.22	717772.55	55.98	345.68	1.47	1.50
8	Grid 8	724024.86	717736.21	224.26	112.87	1.50	1.49
9	Grid 9	722625.09	718039.26	330.50	158.73	1.50	1.50
10	Grid 10	722551.90	718109.11	215.24	275.21	1.49	1.50
11	Grid 11	724191.46	717812.43	334.67	237.62	1.49	1.49
12	Grid 12	724535.56	717804.69	135.35	74.58	1.49	1.49
13	Grid 13	724789.85	717787.16	186.72	79.18	1.49	1.49
14	Grid 14	723524.08	718051.77	101.14	49.34	1.49	1.50

Luminaires

Luminaire A Data



Supplier	C U Phosco
Type	P863-32-P4-WW-E0750-73W
Lamp(s)	730P WW
Lamp Flux (klm)	8.39
File Name	P863-32-P4-WW-E0750-73W.ies
Maintenance Factor	0.80
Imax70,80,90(cd/klm)	682.6, 178.4, 0.0
No. in Project	105

Luminaire B Data



Supplier	C U Phosco
Type	P863-16-P4-NW-F0350-19W
Lamp(s)	740P NW
Lamp Flux (klm)	2.20
File Name	P863-16-P4-NW-F0350-19W.ies
Maintenance Factor	0.80
Imax70,80,90(cd/klm)	653.9, 172.3, 0.0
No. in Project	9

Luminaire C Data



Supplier	C U Phosco
Type	P852-12-R2B-WW-CA0350-15W
Lamp(s)	730C WW
Lamp Flux (klm)	1.73
File Name	P852-12-R2B-WW-CA0350-15W.ies
Maintenance Factor	0.80
Imax70,80,90(cd/klm)	647.8, 59.2, 5.1
No. in Project	9

Luminaire F Data



Supplier	C U Phosco
Type	P863-16-C2-WW-E1000-52W
Lamp(s)	730P WW
Lamp Flux (klm)	5.78
File Name	P863-16-C2-WW-E1000-52W.ies
Maintenance Factor	0.80
Imax70,80,90(cd/klm)	221.9, 18.1, 0.0
No. in Project	10

Layout

ID	Type	X	Y	Height	Angle	Tilt	Cant	Out-reach	Target X	Target Y	Target Z
1	A	723040.00	718035.72	8.00	79.00	5.00	0.00	0.40			
2	A	723080.69	718039.27	8.00	248.00	5.00	0.00	0.40			
3	A	723114.41	718015.76	8.00	83.00	5.00	0.00	0.40			
4	A	723154.13	718032.17	8.00	264.00	5.00	0.00	0.40			
5	A	723188.57	718009.40	8.00	67.00	5.00	0.00	0.40			
6	A	723233.77	718009.10	8.00	245.00	5.00	0.00	0.40			
7	A	723259.90	717974.98	8.50	56.00	5.00	0.00	0.40			
8	A	723302.94	717972.90	8.00	263.00	5.00	0.00	0.40			
9	A	723335.92	717957.11	8.00	108.00	5.00	0.00	0.40			
10	A	723350.94	717987.92	8.00	310.00	5.00	0.00	0.40			
11	A	723384.01	718008.64	8.00	161.00	5.00	0.00	0.40			
12	A	723372.15	718043.55	8.00	2.00	5.00	0.00	0.40			
13	A	723392.19	718079.00	8.00	167.00	5.00	0.00	0.40			
18	B	723432.55	718130.05	6.00	254.00	5.00	0.00	0.40			
19	B	723460.48	718123.87	6.00	255.00	5.00	0.00	0.40			
20	B	723488.40	718117.76	6.00	256.00	5.00	0.00	0.40			
21	B	723518.02	718110.94	6.00	258.00	5.00	0.00	0.40			
22	B	723537.24	718094.92	6.00	79.00	5.00	0.00	0.40			
23	A	723393.97	718117.44	8.00	348.00	5.00	0.00	0.40			
25	A	723416.12	718137.34	8.00	166.00	5.00	0.00	0.40			
26	A	723407.10	718182.07	8.00	348.00	5.00	0.00	0.40			
27	A	723429.58	718213.91	8.00	172.00	5.00	0.00	0.40			
28	A	723431.69	718252.11	8.00	310.00	5.00	0.00	0.40			
29	A	723473.41	718247.84	8.00	95.00	5.00	0.00	0.40			
30	A	723515.01	718264.58	8.00	275.00	5.00	0.00	0.40			
31	A	723556.76	718248.04	8.00	87.00	5.00	0.00	0.40			
32	A	723597.29	718258.04	8.00	258.00	5.00	0.00	0.40			
33	A	723631.11	718233.17	8.00	79.00	5.00	0.00	0.40			
34	A	723672.03	718241.20	8.00	257.00	5.00	0.00	0.40			
35	A	723699.94	718213.62	8.00	62.00	8.00	0.00	0.40			
36	A	723737.73	718208.70	8.00	238.00	8.00	0.00	0.40			
37	A	723746.36	718182.80	8.00	59.00	7.00	0.00	0.40			
38	A	723790.27	718174.69	8.00	234.00	7.00	0.00	0.40			
39	A	723815.86	718137.03	8.00	62.00	5.00	0.00	0.40			
40	A	723860.81	718128.33	8.00	233.00	5.00	0.00	0.40			
41	A	723885.96	718091.68	8.00	57.00	5.00	0.00	0.40			

Layout Continued

ID	Type	X	Y	Height	Angle	Tilt	Cant	Out-reach	Target X	Target Y	Target Z
42	A	723926.96	718085.22	8.00	237.00	5.00	0.00	0.40			
43	A	723950.15	718049.97	8.00	57.00	5.00	0.00	0.40			
44	A	723996.95	718041.59	8.00	241.00	5.00	0.00	0.40			
45	A	723004.07	718056.15	8.00	276.00	5.00	0.00	0.40			
46	A	722967.26	718034.03	8.00	98.00	5.00	0.00	0.40			
49	A	724024.51	718013.96	8.00	75.00	5.00	0.00	0.40			
50	A	724067.24	718021.17	8.00	246.00	5.00	0.00	0.40			
51	A	724065.02	717990.15	8.00	338.00	5.00	0.00	0.40			
52	A	724074.88	717957.14	8.00	162.00	5.00	0.00	0.40			
53	A	724046.08	717928.36	8.00	348.00	5.00	0.00	0.40			
54	A	724053.99	717890.40	8.00	162.00	5.00	0.00	0.40			
55	A	724026.45	717859.81	8.00	344.00	5.00	0.00	0.40			
56	A	724033.62	717823.26	8.00	163.00	5.00	0.00	0.40			
57	A	724012.60	717796.19	8.00	13.00	5.00	0.00	0.40			
58	A	724048.23	717789.76	8.00	226.00	5.00	0.00	0.40			
59	A	724048.82	717758.38	8.00	67.00	5.00	0.00	0.40			
60	A	724088.03	717770.91	8.00	250.00	5.00	0.00	0.40			
61	A	724108.61	717740.66	8.00	88.00	5.00	0.00	0.40			
62	A	724133.84	717768.43	8.00	276.00	5.00	0.00	0.40			
63	A	724172.02	717747.84	8.00	101.00	5.00	0.00	0.40			
64	A	724192.99	717777.39	8.00	281.00	5.00	0.00	0.40			
65	A	724234.60	717774.78	8.00	137.00	5.00	0.00	0.40			
66	A	724220.26	717798.16	8.00	329.00	5.00	0.00	0.40			
67	A	724093.59	718041.87	8.00	173.00	5.00	0.00	0.40			
68	A	724074.12	718067.45	8.00	7.00	5.00	0.00	0.40			
70	A	722927.85	718043.36	8.00	276.00	5.00	0.00	0.40			
71	A	722899.42	718024.46	8.00	86.00	5.00	0.00	0.40			
72	A	722864.49	718042.91	8.00	260.00	5.00	0.00	0.40			
73	A	722826.83	718032.78	8.00	75.00	5.00	0.00	0.40			
74	A	722798.55	718058.64	8.00	249.00	5.00	0.00	0.40			
75	A	722760.90	718056.34	8.00	64.00	5.00	0.00	0.40			
76	A	722739.00	718089.08	8.00	235.00	5.00	0.00	0.40			
77	A	722699.13	718097.94	8.00	50.00	5.00	0.00	0.40			
78	A	722685.21	718135.49	8.00	224.00	5.00	0.00	0.40			
79	A	722649.53	718153.42	8.00	33.00	5.00	0.00	0.40			
80	A	722642.82	718192.37	8.00	211.00	5.00	0.00	0.40			

Layout Continued

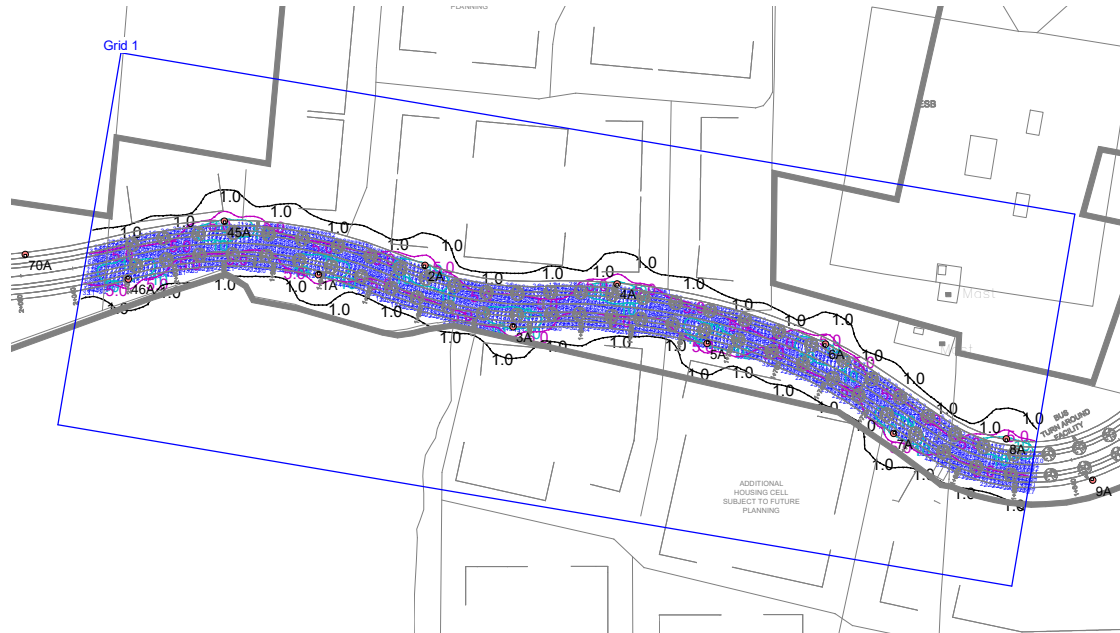
ID	Type	X	Y	Height	Angle	Tilt	Cant	Out-reach	Target X	Target Y	Target Z
81	A	722611.03	718215.21	8.00	28.00	5.00	0.00	0.40			
82	A	722607.60	718250.73	8.00	211.00	5.00	0.00	0.40			
83	A	722575.96	718274.90	8.00	21.00	5.00	0.00	0.40			
84	A	722575.36	718314.60	8.00	202.00	5.00	0.00	0.40			
85	A	722544.32	718342.51	8.00	19.00	5.00	0.00	0.40			
86	A	722545.96	718381.31	8.00	205.00	5.00	0.00	0.40			
87	A	724204.54	717734.13	8.00	344.00	5.00	0.00	0.40			
88	A	724234.12	717728.24	8.00	171.00	5.00	0.00	0.40			
81	A	724253.71	717819.99	8.00	167.00	5.00	0.00	0.40			
82	A	724236.35	717849.41	8.00	344.00	5.00	0.00	0.40			
83	A	724269.71	717873.14	8.00	161.00	5.00	0.00	0.40			
84	A	724252.50	717902.46	8.00	347.00	5.00	0.00	0.40			
85	A	724283.59	717919.39	8.00	155.00	5.00	0.00	0.40			
86	A	724270.83	717954.24	8.00	339.00	5.00	0.00	0.40			
87	A	724308.56	717947.70	8.00	100.00	5.00	0.00	0.40			
88	A	724266.31	717979.07	8.00	8.00	5.00	0.00	0.40			
89	A	724332.01	717986.28	8.00	193.00	5.00	0.00	0.40			
90	A	724307.18	718017.28	8.00	254.00	5.00	0.00	0.40			
91	A	724277.84	718009.58	8.00	324.00	5.00	0.00	0.40			
92	A	724329.68	717935.72	8.00	49.00	5.00	0.00	0.40			
93	A	724345.04	717959.70	8.00	223.00	5.00	0.00	0.40			
94	A	724368.62	717935.66	8.00	221.00	5.00	0.00	0.40			
95	A	724360.70	717902.36	8.00	42.00	5.00	0.00	0.40			
96	A	724397.12	717907.99	8.00	230.00	5.00	0.00	0.40			
97	A	724392.14	717876.15	8.00	52.00	5.00	0.00	0.40			
98	A	724432.74	717880.75	8.00	243.00	5.00	0.00	0.40			
99	A	724439.76	717849.17	8.00	68.00	5.00	0.00	0.40			
100	A	724481.97	717866.54	8.00	254.00	5.00	0.00	0.40			
101	A	724489.59	717835.29	8.00	79.00	5.00	0.00	0.40			
102	A	724518.06	717858.43	8.00	254.00	5.00	0.00	0.40			
103	A	724533.63	717827.35	8.00	77.00	5.00	0.00	0.50			
104	A	724566.23	717849.32	8.00	257.00	5.00	0.00	0.50			
105	A	724578.60	717814.52	8.00	84.00	5.00	0.00	0.50			
106	A	724604.43	717849.68	8.00	299.00	5.00	0.00	0.50			
107	A	724647.29	717841.72	8.00	223.00	5.00	0.00	0.50			
108	A	724599.50	717796.63	8.00	45.00	5.00	0.00	0.50			

Layout Continued

ID	Type	X	Y	Height	Angle	Tilt	Cant	Out-reach	Target X	Target Y	Target Z
109	A	724656.53	717806.16	8.00	129.00	5.00	0.00	0.50			
110	A	724630.66	717791.48	8.00	104.00	5.00	0.00	0.50			
111	C	724757.13	717827.44	5.00	274.00	0.00	0.00	0.50			
112	C	724784.26	717828.30	5.00	272.00	0.00	0.00	0.50			
113	C	724803.30	717836.41	5.00	299.00	0.00	0.00	0.50			
114	C	724817.23	717848.44	5.00	332.00	0.00	0.00	0.50			
115	C	724826.47	717872.11	5.00	347.00	0.00	0.00	0.50			
116	C	724825.97	717894.37	5.00	0.00	0.00	0.00	0.50			
117	C	724832.99	717920.46	5.00	330.00	0.00	0.00	0.50			
118	C	724850.67	717926.92	5.00	145.00	0.00	0.00	0.50			
119	C	724853.93	717949.05	5.00	166.00	0.00	0.00	0.50			
120	F	723549.49	718087.10	8.00	254.00	5.00	0.00	0.40			
121	F	723542.11	718069.43	8.00	75.00	5.00	0.00	0.40			
122	F	723563.62	718083.61	8.00	257.00	5.00	0.00	0.40			
123	F	723562.30	718063.53	8.00	76.00	5.00	0.00	0.40			
124	F	723571.59	718067.57	8.00	343.00	5.00	0.00	0.40			
125	F	723582.96	718079.73	8.00	164.00	5.00	0.00	0.40			
126	F	723591.68	718076.29	8.00	256.00	5.00	0.00	0.40			
127	F	723611.64	718070.99	8.00	253.00	5.00	0.00	0.40			
128	F	723588.98	718060.00	8.00	75.00	5.00	0.00	0.40			
129	F	723613.41	718054.07	8.00	80.00	5.00	0.00	0.40			
130	B	723601.22	718057.80	6.00	253.00	5.00	0.00	0.40			
131	B	723573.80	718046.51	6.00	75.00	5.00	0.00	0.40			
132	B	723594.91	718041.22	6.00	75.00	5.00	0.00	0.40			
133	B	723614.74	718042.56	6.00	165.00	5.00	0.00	0.40			

Horizontal Illuminance (lux)

Grid 1



Results

Eav	7.86
Emin	1.75
Emax	35.71
Emin/Emax	0.05
Emin/Eav	0.22

Horizontal Illuminance (lux)

Grid 2



Results

Eav	7.95
Emin	1.58
Emax	36.55
Emin/Emax	0.04
Emin/Eav	0.20

Horizontal Illuminance (lux)

Grid 5



Results

Eav	20.23
Emin	5.06
Emax	44.48
Emin/Emax	0.11
Emin/Eav	0.25

Horizontal Illuminance (lux)

Grid 6



Results

Eav	20.23
Emin	5.06
Emax	44.48
Emin/Emax	0.11
Emin/Eav	0.25

Horizontal Illuminance (lux)

Grid 7

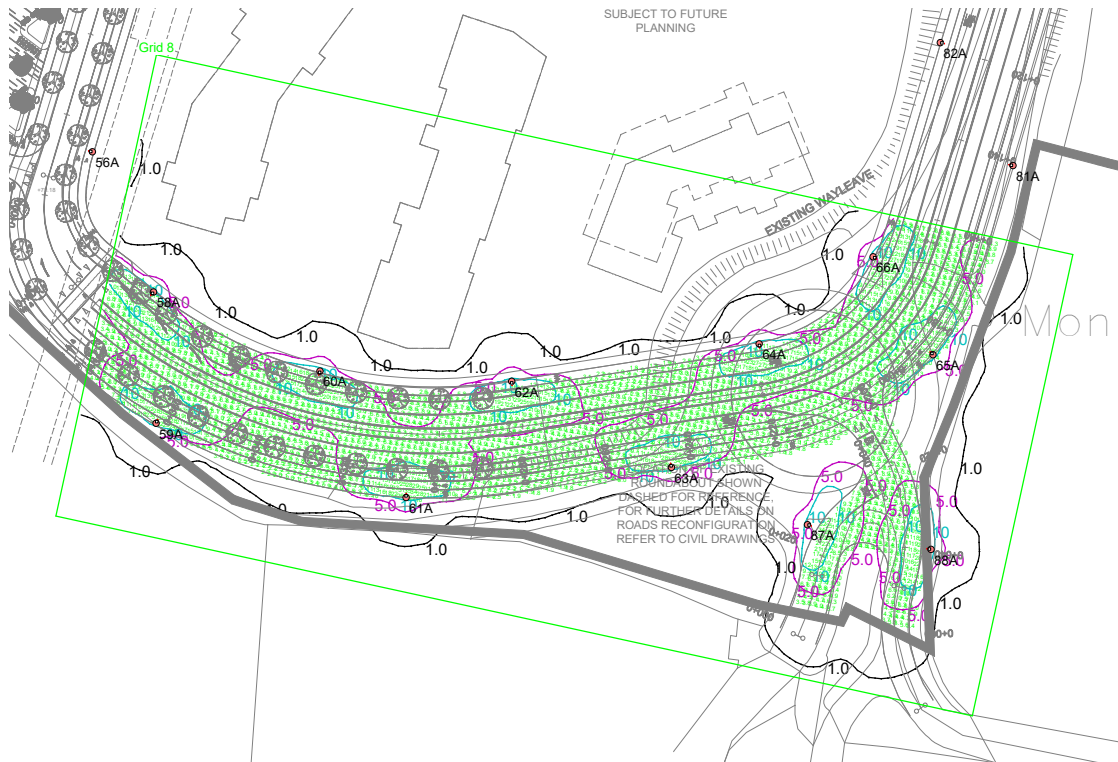


Results

Eav	20.23
Emin	5.06
Emax	44.48
Emin/Emax	0.11
Emin/Eav	0.25

Horizontal Illuminance (lux)

Grid 8

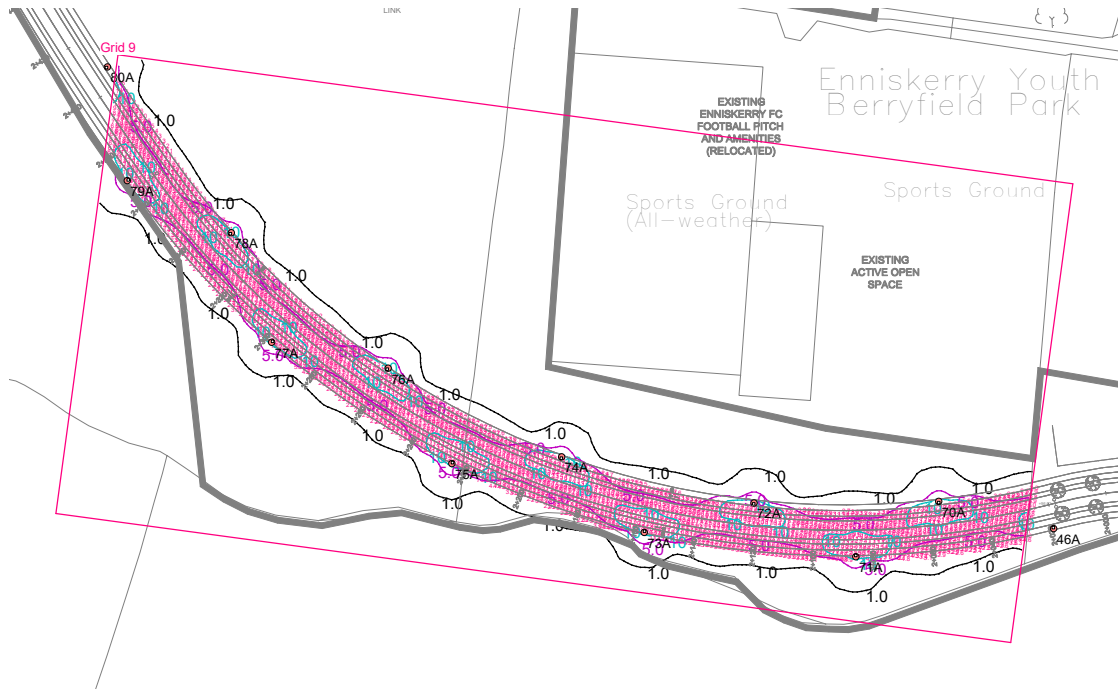


Results

Eav	20.23
Emin	5.06
Emax	44.48
Emin/Emax	0.11
Emin/Eav	0.25

Horizontal Illuminance (lux)

Grid 9



Results

Eav	20.23
Emin	5.06
Emax	44.48
Emin/Emax	0.11
Emin/Eav	0.25

Horizontal Illuminance (lux)

Grid 10



Results

Eav	20.23
Emin	5.06
E _{max}	44.48
Emin/E _{max}	0.11
Emin/Eav	0.25

Horizontal Illuminance (lux)

Grid 11

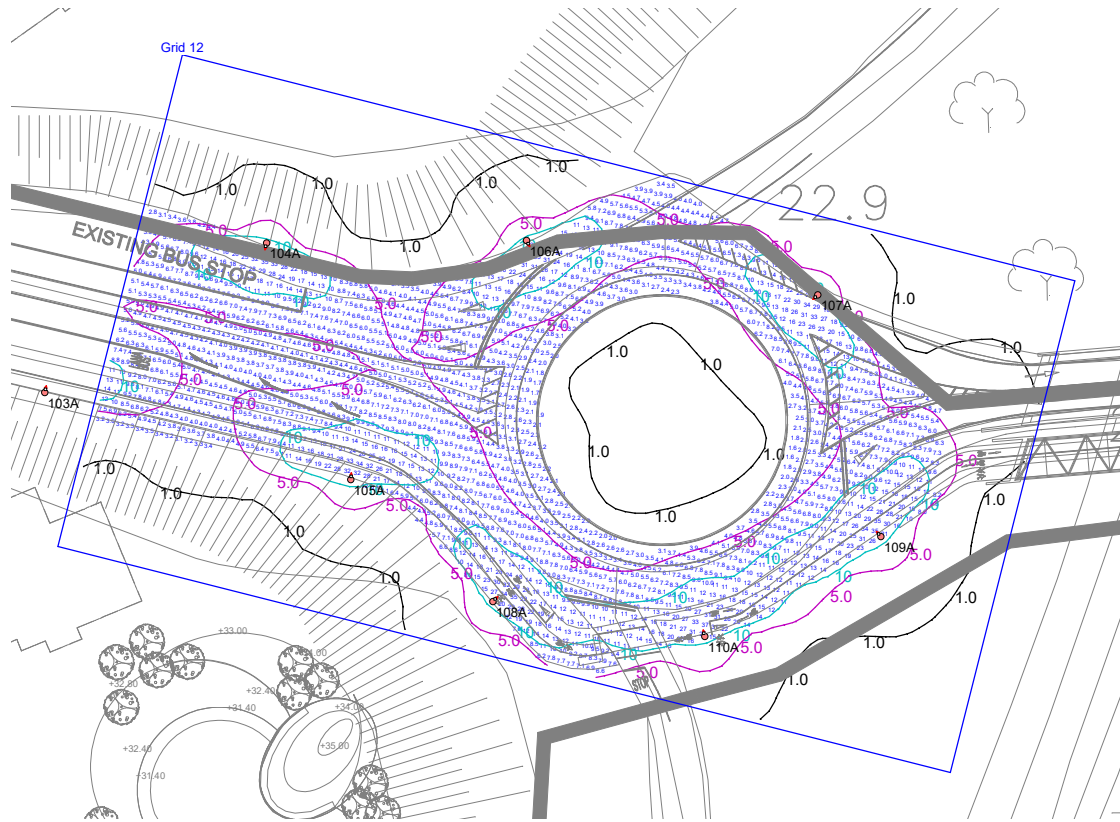


Results

Eav	20.23
Emin	5.06
Emax	44.48
Emin/Emax	0.11
Emin/Eav	0.25

Horizontal Illuminance (lux)

Grid 12

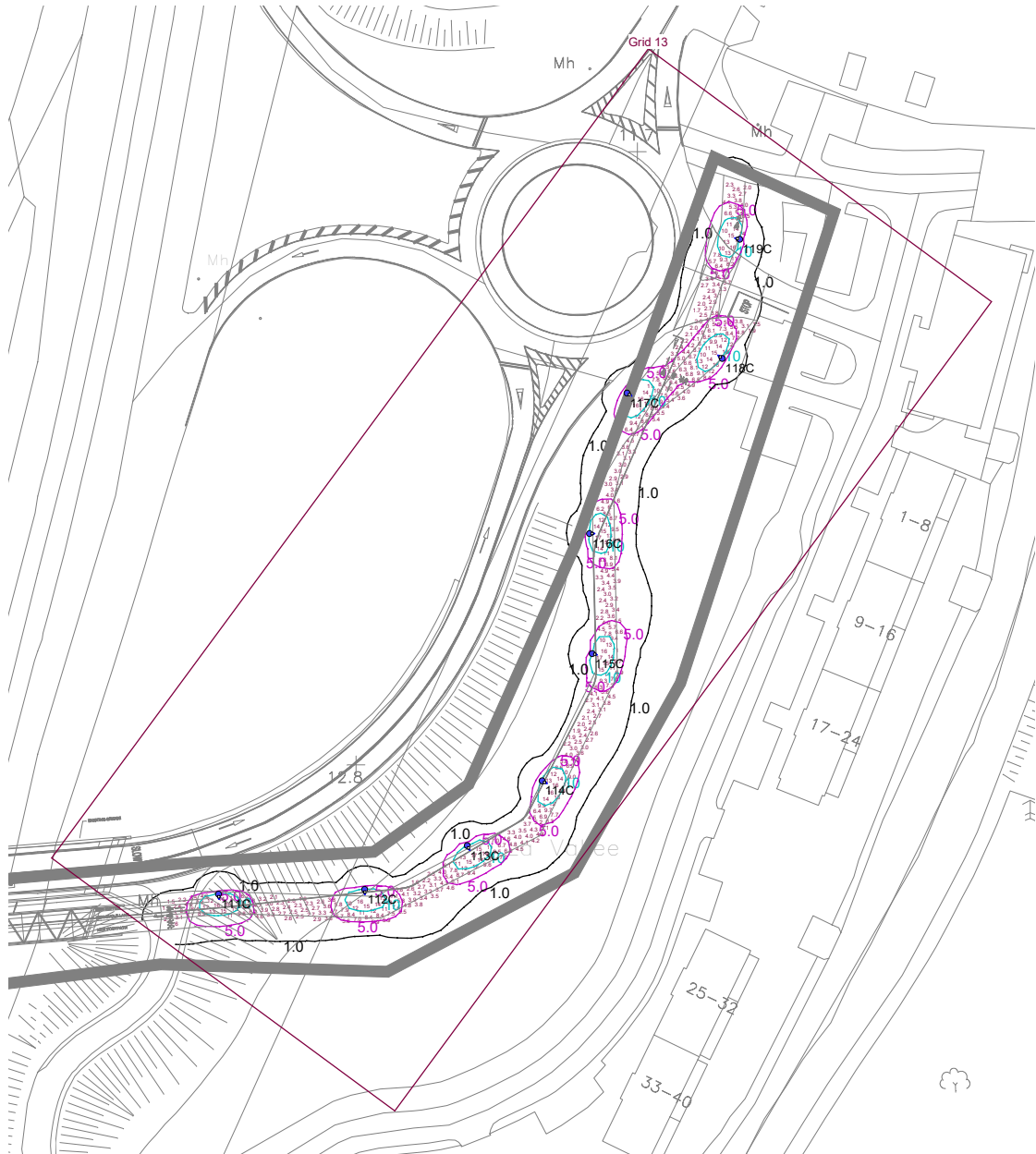


Results

Eav	8.54
Emin	1.62
Emax	36.58
Emin/Emax	0.04
Emin/Eav	0.19

Horizontal Illuminance (lux)

Grid 13

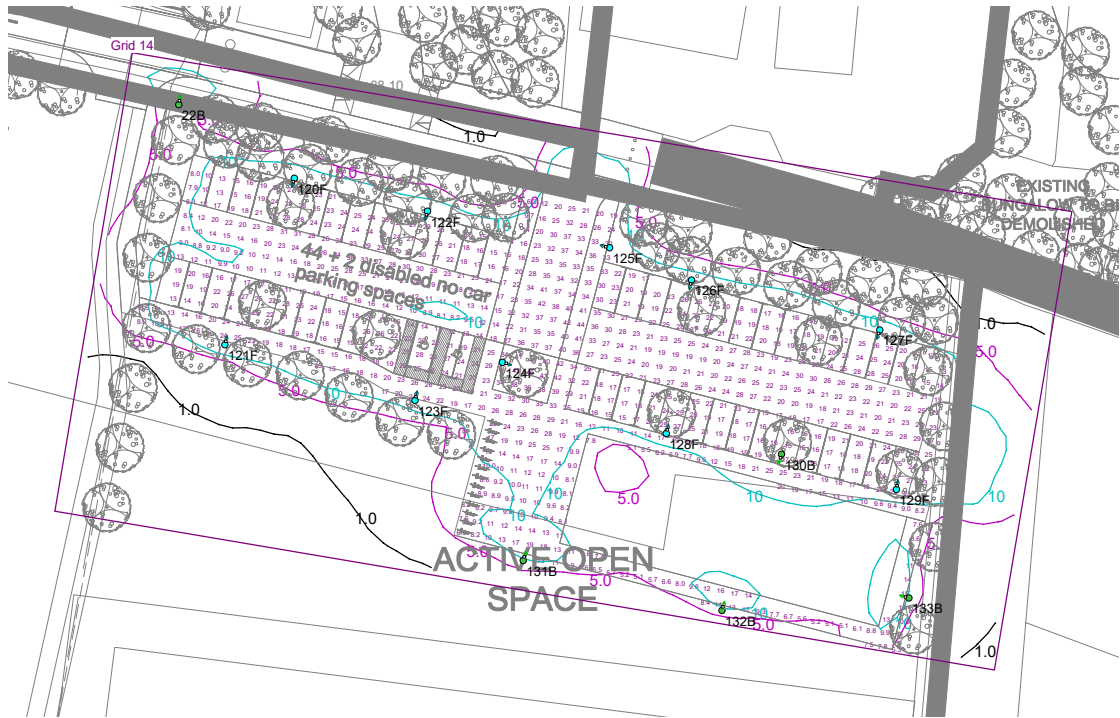


Results

Eav	6.85
Emin	1.50
Emax	17.41
Emin/Emax	0.09
Emin/Eav	0.22

Horizontal Illuminance (lux)

Grid 14



Results

Eav	20.23
Emin	5.06
Emax	44.48
Emin/Emax	0.11
Emin/Eav	0.25